

Warm-up: Wednesday, Dec. 1, 2010

Write the equation of each line in the given form.

- 1) the line with the x -intercept 3 and y -intercept -5 in point slope form**

- 2) the line with slope 0 through (4, 6) in slope-intercept form**

- 3) the line through $(-3, 2)$ and $(1, 2)$ in point-slope form**

3-6 Conitnued

Graphing Lines!

Example 1:

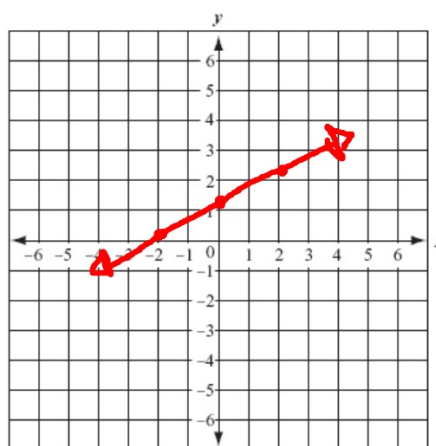
Graph each line.

$$y = \frac{1}{2}x + 1$$

$$y = mX + b$$

↑ ↑
slope y-int

$$\frac{1}{2} \qquad -\frac{1}{2}$$



Example 2

Graph each line.

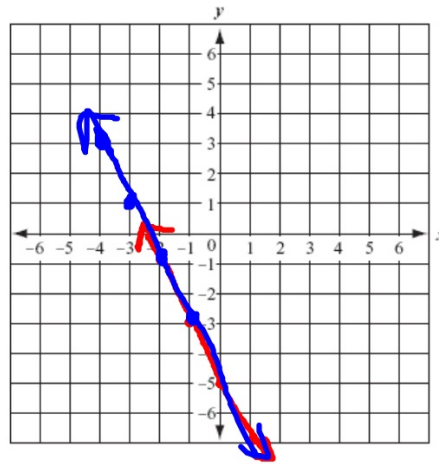
$$y - 3 = -2(x + 4)$$

$$\begin{array}{rcl} y - 3 & = & -2x - 8 \\ +3 & & +3 \end{array}$$

$$y = -2x - 5$$

point: $(-4, 3)$

Slope: -2



$$0 - 3 = -2(x + 4)$$

$$y - 3 = -2(0 + 4)$$

Example 3

Graph each line.

$$y = -3$$

